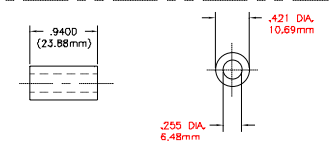


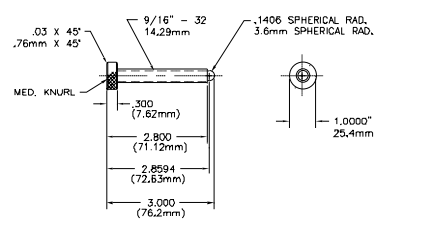
| REVISIONS | |
|-----------|---------------------------------------|
| 1 | LEVELING SCREW SIZE, SPACER & JAM NUT |

① PLATE-2 ~ 6061-T6 ALUM ~ (1) REQ'D.

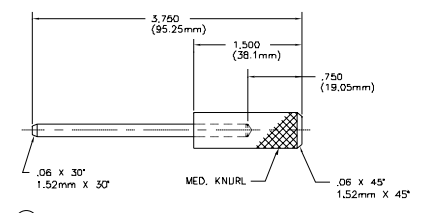
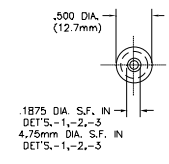


EACH SET OF 12 (PER PLATE ASSY) TO BE +/- .001" OF EACH OTHER

⑧ SPACER ~ CRES. ~ (12) REQ'D.
SCALE: 2 X SIZE



④ LEVELING SCR. ~ CRES. ~ (3) REQ'D.



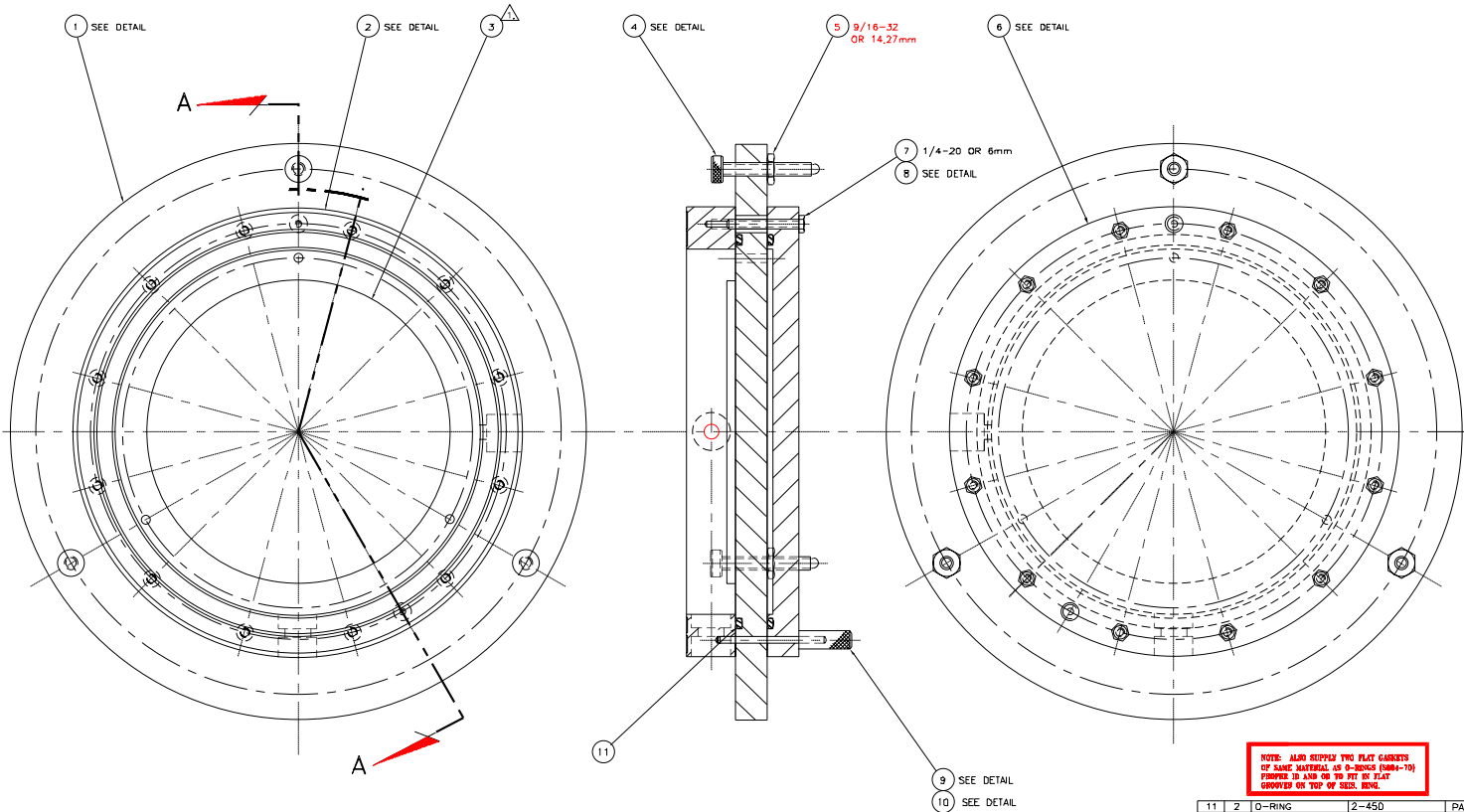
⑨ ALIGNMENT-PIN ~ HDN. DR. BLK. ~ (2) REQ'D.
⑩ HANDLE ~ 6061-T6 ~ (2) REQ'D.
SCALE: 2 X SIZE

| | |
|---|-------------------|
| US GEOLOGICAL SURVEY ALBUQUERQUE REGIONAL OFFICE | |
| Robert L. Young 1/17/07 | DETAIL-2 |
| WYTELAND 1/17/07 | FOR STS-1 FIXTURE |
| 05/05/01 | ASL-2 |

NOTES:

△ GLASS PLATE TO BE TEMPERED AND FROSTED, BOTH SIDES AND BONDED TO DETAIL-1 WITH EPOXY.

| REVISIONS | |
|-----------|--|
| | |
| | |
| | |



SECTION: A-A

NOTE: ALL DIMENSIONS ARE +/- .005" TOLERANCE UNLESS OTHERWISE SPECIFIED

NOTE: ALSO SUPPLY TWO PLAT GASKETS OF SAME MATERIAL AS O-RINGS (3060-10) FINISH TO SIZE OR TO FIT IN FLAT GROOVES ON TOP OF SEIS. RING.

| | | | | |
|----|----|---------------|-------------------------|---------------|
| 11 | 2 | O-RING | 2-450 | PARKER |
| 10 | 2 | HANDLE | 1/2 DIA. X 1 1/2 LG. | 6061-T6 ALUM |
| 9 | 2 | ALIGNMENT-PIN | 3/16 DIA. X 3" LG. | MIN. DR. BLK. |
| 8 | 12 | SPACER | 1/2 DIA. X 1" LG. | CRES. |
| 7 | 12 | HEX HD. SCR. | 1/4-20 X 2 1/4" LG. | CRES. |
| 6 | 1 | BOTTOM PLATE | 12 3/4 DIA. X 1" LG. | 6061-T6 ALUM |
| 5 | 3 | JAM NUT | 9/16-32 THD. | CRES. |
| 4 | 3 | LEVELING SCR. | 3/8 DIA. X 3" LG. | CRES. |
| 3 | 1 | GLASS PLATE | 8 1/2 DIA. X 1/4 LG. | PURCH. |
| 2 | 1 | SEIS-RING | 12 3/4 DIA. X 1 1/2 LG. | 6061-T6 ALUM |
| 1 | 1 | PLATE-2 | 16 1/2 DIA. X 1" LG. | 6061-T6 ALUM |

| U.S. GEOLOGICAL SURVEY | |
|--|----------|
| ALBUQUERQUE REGIONAL LABORATORY | |
| Robert A. Trone | 2/2/79 |
| ASSEMBLY CROSS SECTION FOR STS-1 FIXTURE | |
| WETLAND | 7/2/79 |
| E | ASL-ASSY |
| 06/05/81 | FILE |