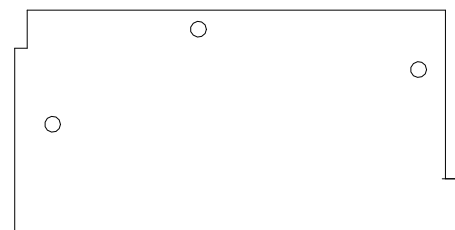
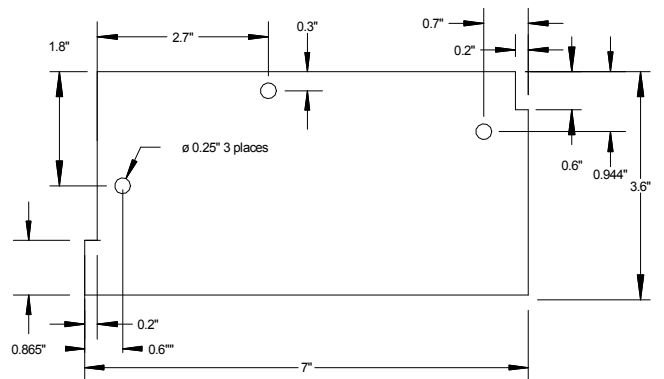
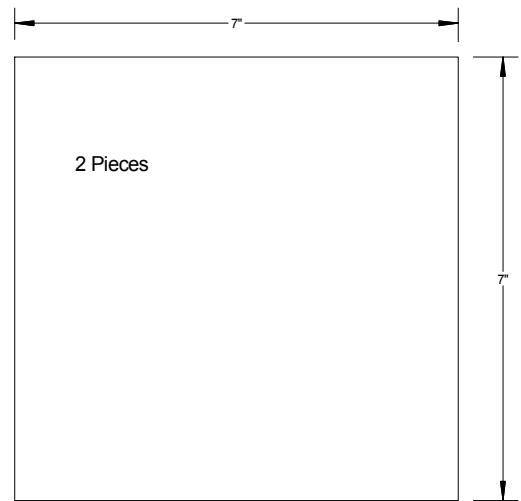
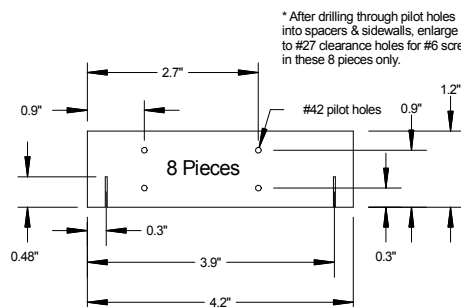


Alignment
Templates

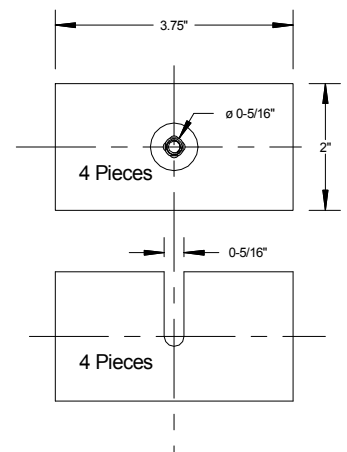
All pieces from 3/8" birch airplane plywood
GL II 7-ply or greater
Scaled x 1.524 from E. Wielandt original

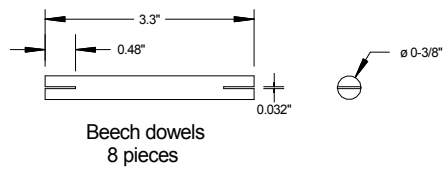
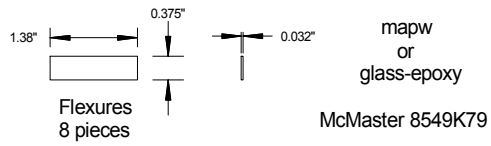
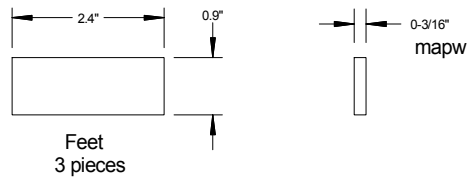
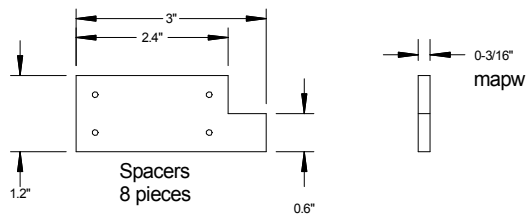


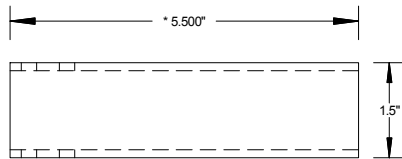
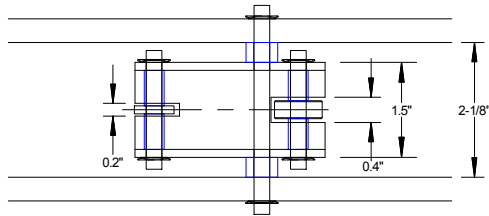
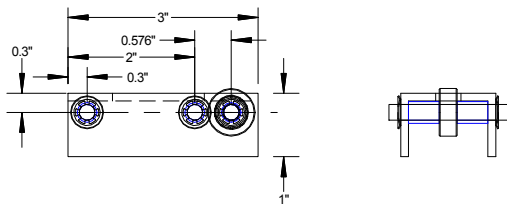
Mirror image except for holes.



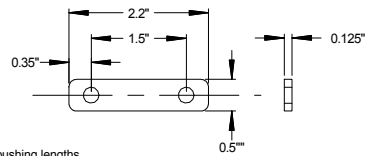
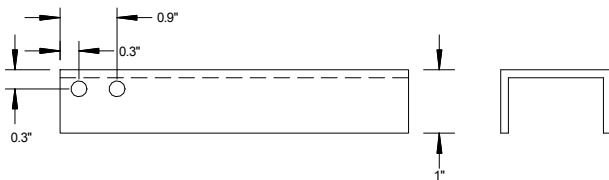
Clamps





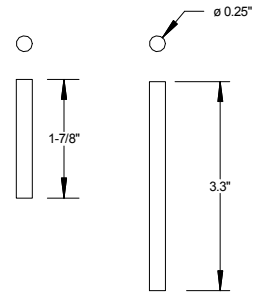
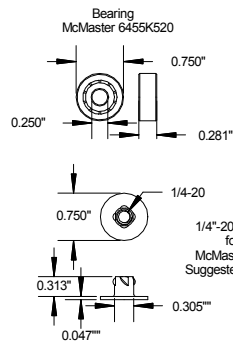
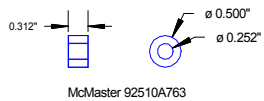
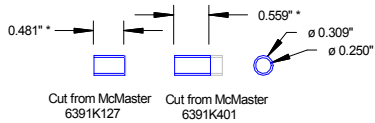


1-1/2" x 1" x 1/8" channel
6063 Architectural Aluminum
http://www.discountsteel.com/items/6063_Aluminum_Channel.cfm?item_id=144&size_no=12



1/2" x 1/8" bar
6061-T6 Aluminum
http://www.discountsteel.com/items/6061_Aluminum_Flat_Bar.cfm?item_id=133&size_no=1

* Trim bushing lengths to match channel width.



McMaster
9095K98

