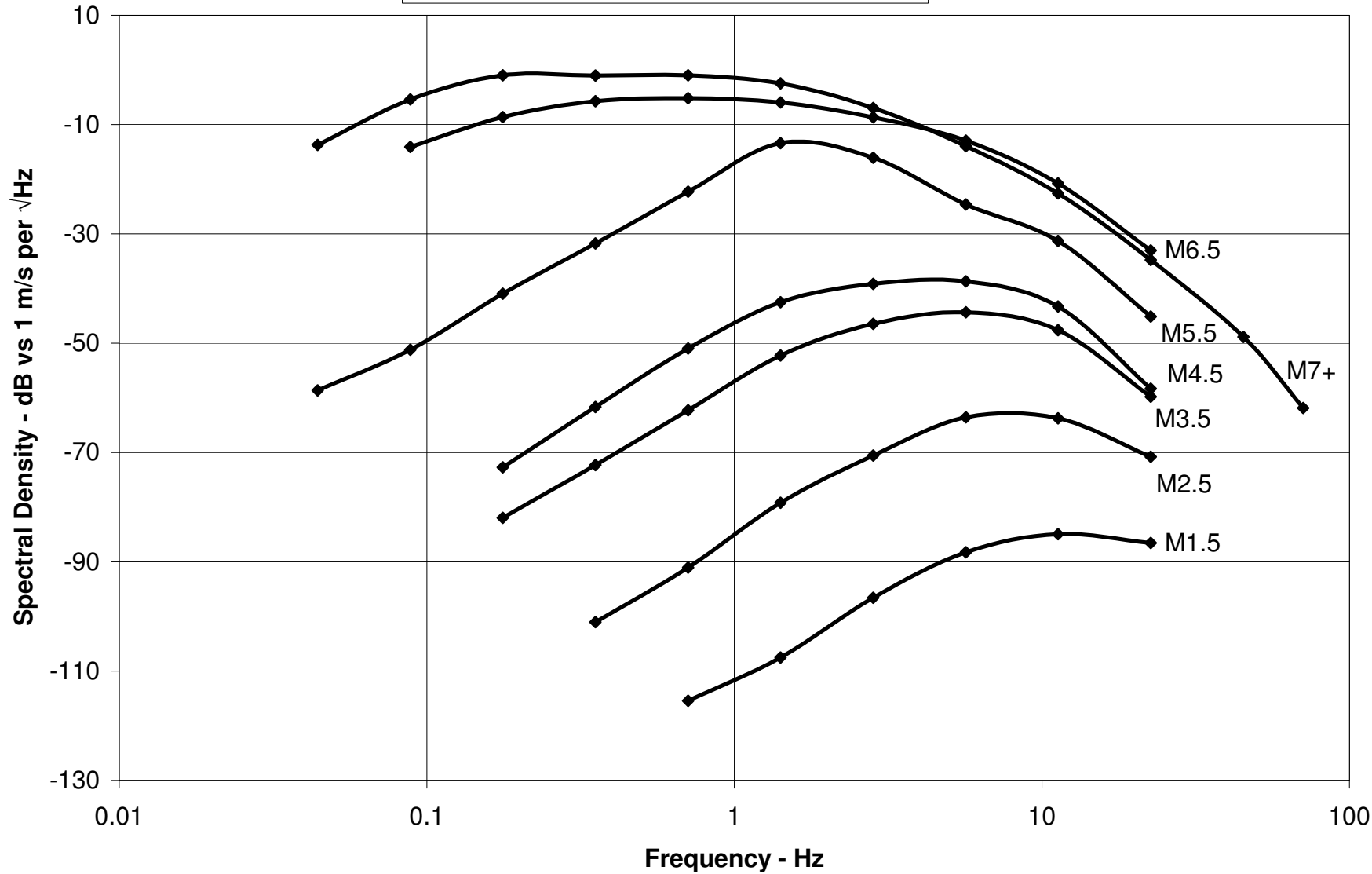
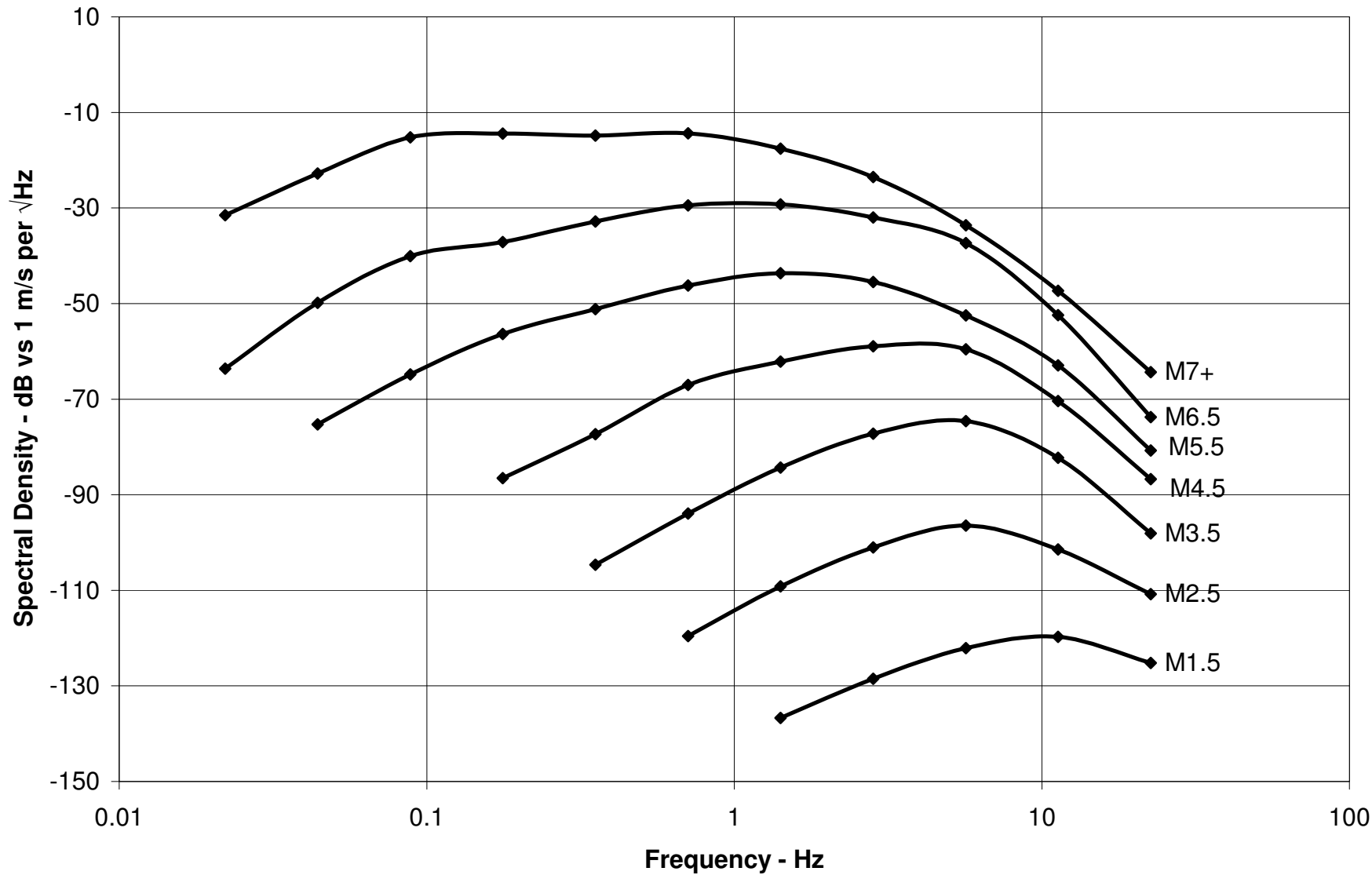


**Local Earthquakes (~10km)**  
*From Clinton and Heaton, Seis.Res.Let. 2002,v73,n3*



**Regional Earthquakes (~100km)**  
*From Clinton and Heaton, Seis.Res.Let. 2002,v73,n3,p332*



**Teleseismic Earthquakes (~3000km)**  
*From Clinton and Heaton, Seis.Res.Let. 2002,v73,n3*

